

## PRODUCT SAFETY RECALL

Dear valued Whiteline customer,

We wish to advise of a possible production defect tolerance issue regarding the below Whiteline rear sway bars.

### Part Numbers

BSR33Z  
BSR33XZ

### Applicable Vehicles

Subaru Impreza GD1 MY01-02 INCL TURBO & STI 10/00-9/02

### Defect

Possible blade clearance issues with factory brake line (refer image below)

### Part Numbers

BSR36Z  
BSR36XZ

### Applicable Vehicles

Subaru Impreza STI GD MY03-04 10/02-9/04

Subaru Impreza GD2 MY03-07 INCL WRX, EXCL STI 9/02-9/07

Saab 9-2X 9-2X 9/02-9/07

### Defect

Possible blade clearance issues with factory brake line  
(refer image below)



FOLLOW WHITELINE  
[www.facebook.com/whitelineflatout](http://www.facebook.com/whitelineflatout)



FOLLOW WHITELINE  
[www.youtube.com/whitelineflatout](http://www.youtube.com/whitelineflatout)

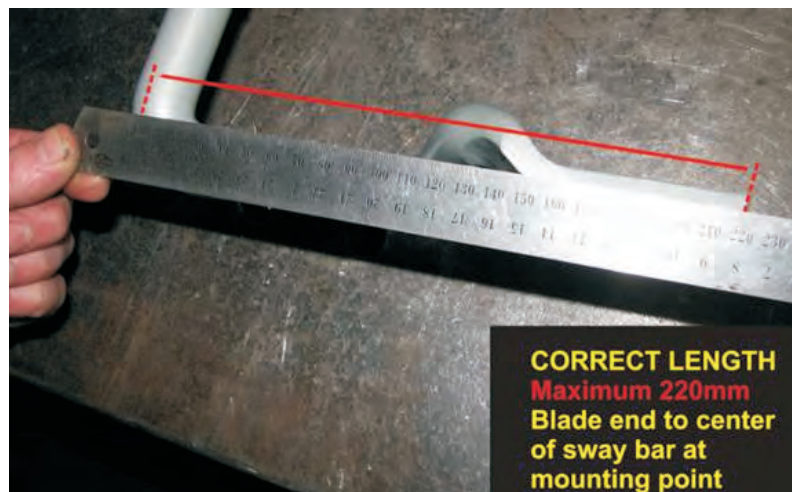
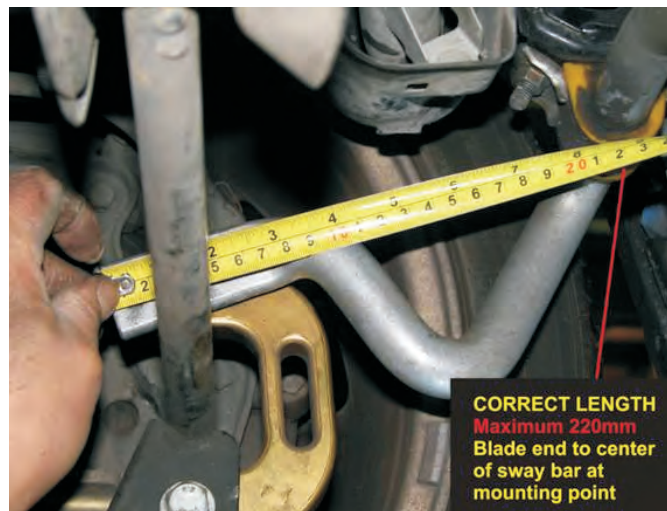
# WHITELINE

Australia Free call 1300-882-355 or [sales@whiteline.com.au](mailto:sales@whiteline.com.au)  
USA call 909-476-2860 or [sales@redrangerusa.com](mailto:sales@redrangerusa.com)  
UK/ Europe call +441383-723-850 or [sales@redrangeruk.co.uk](mailto:sales@redrangeruk.co.uk)  
Website - [www.whiteline.com.au](http://www.whiteline.com.au)  
Facebook - [www.facebook.com/whitelineflatout](http://www.facebook.com/whitelineflatout)

## PRODUCT SAFETY RECALL

### Action required

1. Please immediately quarantine stock of any of the above part numbers and advise [support@whiteline.com.au](mailto:support@whiteline.com.au) of current inventory on hand
2. Note guidelines to check possibly affected stock are as follows;
  - a. Stock purchased and installed since **October 2010 to present**.
  - b. For inventory currently on the shelf please quarantine stock with production **batch date** on the part number label of **September 2010 onwards**.
3. Please advise all affected customers within this date range (October 2010 to present) to inspect the clearance of their fitted Whiteline sway bar blade ends (both ends) based on the image below. If support is required in contacting customers please advise [support@whiteline.com.au](mailto:support@whiteline.com.au)
  - a. **Maximum length of 220mm blade arm to center of the sway bar at the mounting point** (refer images below). If unable to inspect or accurately measure we strongly urge customer to take their vehicle to the original installer or nearest authorised Whiteline Performance Center for inspection (for locations [click here](#)).



FOLLOW WHITELINE  
[www.facebook.com/whitelineflatout](http://www.facebook.com/whitelineflatout)



FOLLOW WHITELINE  
[www.youtube.com/whitelineflatout](http://www.youtube.com/whitelineflatout)

# WHITELINE

Australia Free call 1300-882-355 or [sales@whiteline.com.au](mailto:sales@whiteline.com.au)  
USA call 909-476-2860 or [sales@redrangerusa.com](mailto:sales@redrangerusa.com)  
UK/ Europe call +441383-723-850 or [sales@redrangeruk.co.uk](mailto:sales@redrangeruk.co.uk)  
Website - [www.whiteline.com.au](http://www.whiteline.com.au)  
Facebook - [www.facebook.com/whitelineflatout](http://www.facebook.com/whitelineflatout)

## PRODUCT SAFETY RECALL

4. Should the bar be deemed to be exceeding the critical length of 220mm or should the customer show concern over this product issue we strongly urge you to please contact [support@whiteline.com.au](mailto:support@whiteline.com.au) to request a replacement, with the following information;
  - a. Location/ shipping address
  - b. Dealer from whom they purchased sway bar in question
  - c. Picture evidence (this will allow these requests to be processed in a more timely manner).
5. Whiteline is applying its maximum resources to arrange immediate replacement stock however should stock be unavailable at the point of inspection/ request and the car is considered un-roadworthy please undertake the following **precautionary measure** whilst replacement stock is arranged.
  - a. We recommend you refit the original factory sway bar
  - b. If no factory bar is available, we recommend the bar is removed from the vehicle and shortened as per below image.



We apologise for the inconvenience this product issue may cause and Whiteline will provide replacement stock at no charge to the dealer or consumer. Whiteline will also be offering compensation for labour costs via a number of methods suitable to those affected!



FOLLOW WHITELINE  
[www.facebook.com/whitelineflatout](http://www.facebook.com/whitelineflatout)



FOLLOW WHITELINE  
[www.youtube.com/whitelineflatout](http://www.youtube.com/whitelineflatout)

# WHITELINE

Australia Free call 1300-882-355 or [sales@whiteline.com.au](mailto:sales@whiteline.com.au)  
USA call 909-476-2860 or [sales@redrangerusa.com](mailto:sales@redrangerusa.com)  
UK/ Europe call +441383-723-850 or [sales@redrangeruk.co.uk](mailto:sales@redrangeruk.co.uk)  
Website - [www.whiteline.com.au](http://www.whiteline.com.au)  
Facebook - [www.facebook.com/whitelineflatout](http://www.facebook.com/whitelineflatout)