

Installation Guide

Front lower control arm – inner rear bush

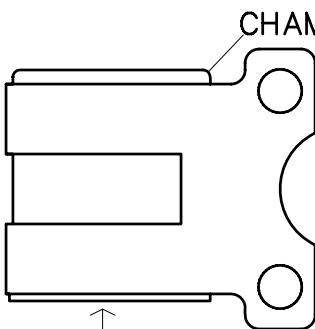
Suits :Mazda3 1/04 – 3/08

(Always refer to the current catalogue for complete application listings).

N.B.This install guide should be used in conjunction with the workshop manual.

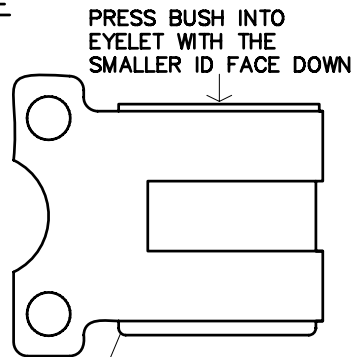
PLEASE READ PRIOR TO PRESSING IN BUSH:

LEFT FRONT

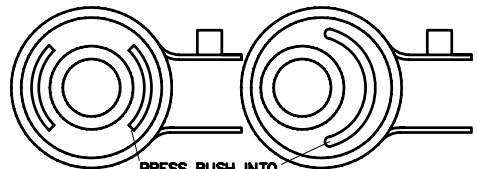
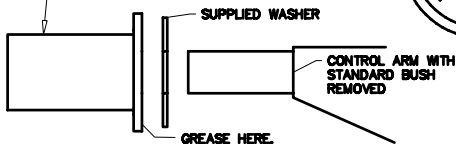


PRESS BUSH INTO
EYELET WITH THE
LARGER ID FACE DOWN

RIGHT FRONT



INNER BUSH
87143—DO NOT
GREASE INSIDE
THIS BUSH.



PRESS BUSH INTO
HOUSING WITH VOIDS
POSITIONED HORIZONTALLY
AND OFFSET TOWARD
CENTRE OF VEHICLE

N.B. It is recommended that a licenced workshop or trades person carry out the above procedure and that workshop manual and relevant safety procedures are followed in addition to the above.